



## SMART SOLUTIONS FOR RENOVATIONS

**thin porcelain stoneware**





# RENOVATIONS: A REAL NIGHTMARE

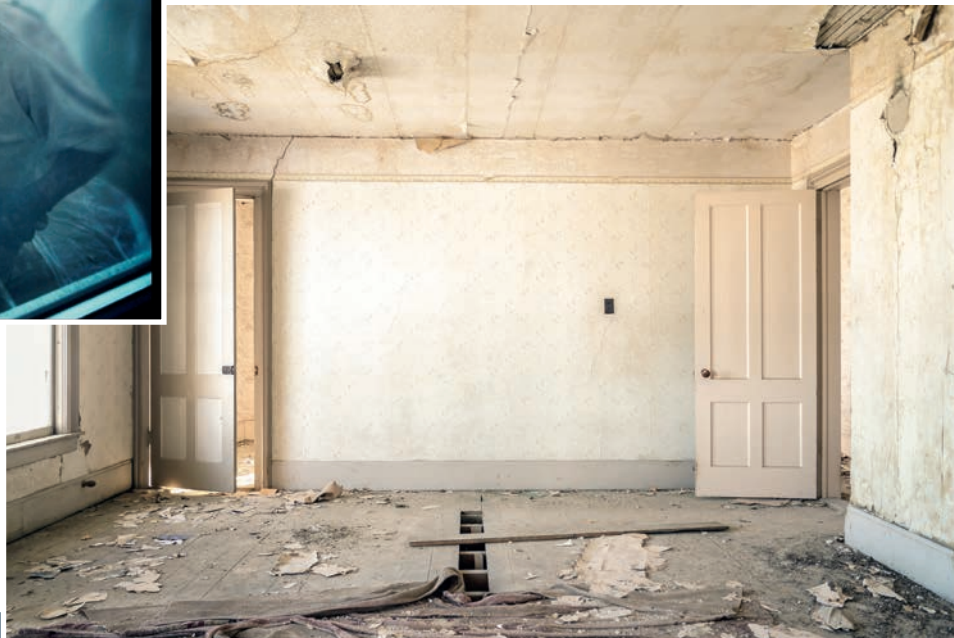
# Bslim PORCELAIN STONEWARE: THE SOLUTION

high tech ceramics

\* Test values refer to Daring 6"x24"

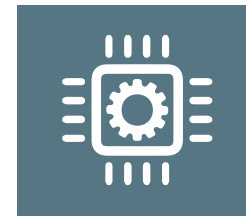


No dust,  
no noise,  
no waste



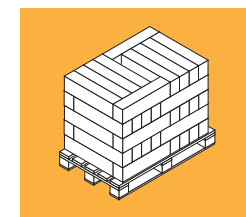
Save money, time  
and backache  
eliminating the  
demolition of pre-  
existing material

No need to  
build a new  
screed



## HI-TECH CERAMICS

- Better raw material to improve resistance of the product
- Modulus of rupture average 57,9 N/mm<sup>2</sup>\*, same as standard thick tiles
- Average breaking strength 982 N\*
- Higher thermal conductivity properties: particularly suited for underfloor heating



## SPACE AND COST SAVING

- Same warehouse space occupied, + 23% Sq. M. available: more value per single slot on the point of sale
- Less logistic costs:
  - Same container weight, +23% Sq. M. loaded
  - Same number of pallets moved, +23% Sq. M. handled



## ENVIRONMENT-FRIENDLY

- Reduction of packaging (less 23%)
- Reduction of raw material use (less 20%)
- Less CO<sup>2</sup> in atmosphere due to reduction of road transports
- 50% recycled content



## NEW AREAS OF APPLICATION

- Particularly suitable for ships internal coverings
- Suitable for trailers
- Suitable for external insulation covering



## SUITABLE FOR BUILDING RENOVATION

- The removal of pre-existing material is not needed
- Thickness is less than 1 cm (tile, adhesive and ceramic)
- The product is lighter and handy to get a fast and easy tiling







# DARING 6"x24"



Ivory



Ecrù



Honey



Greige



Dark



## PACKAGING

KG/MQ	14.29	Lb/Sq. Ft	2.93
Pcs/BOX	16	Pcs/BOX	16
MQ/BOX	1.47	Sq. Ft./BOX	15.82
BOX/Pallet	48	BOX/Pallet	48
MQ/Pallet	70.56	Sq. Ft./Pallet	759.5
KG/Pallet	1008	Lb/Pallet	2223

## TIP:

We recommend to spread the adhesive, both on the back of the tile and on the laying surface



# SKYLINE 2 1/3"x10"



**Bslim** porcelain stoneware  
high tech ceramics

BLACK



MUSK



DARK GREY



LIGHT BLUE



GREY



TAUPE



WHITE



BEIGE



BRONZE



IRON



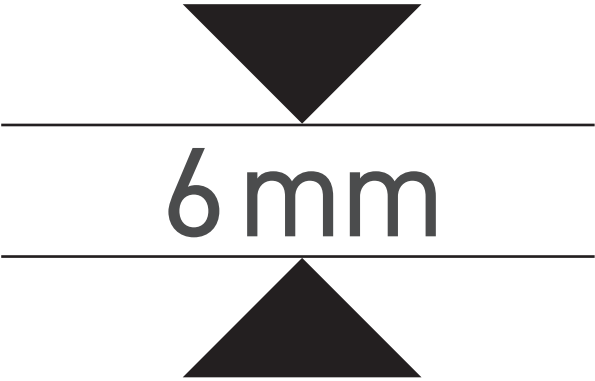
2 1/3"x10" - 6x25

## PACKAGING

KG/MQ	13.07	Lb/Sq. Ft.	2.68
Pcs/BOX	50	Pcs/BOX	50
MQ/BOX	0.75	Sq. Ft./BOX	8.07
BOX/Pallet	100	BOX/Pallet	100
MQ/Pallet	75.00	Sq. Ft./Pallet	807.3
KG/Pallet	980	Lb/Pallet	2160.5

## TIP:

We recommend to spread the adhesive, both on the back of the tile and on the laying surface



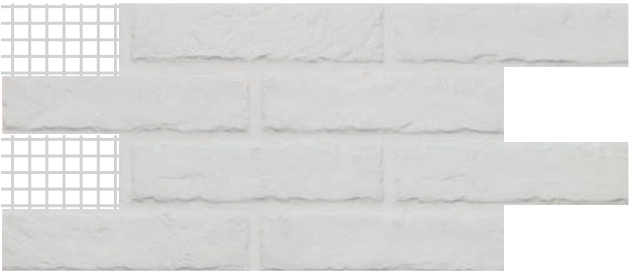






# THE WALL 20"x11"

WHITE



FOG



RED



GREY



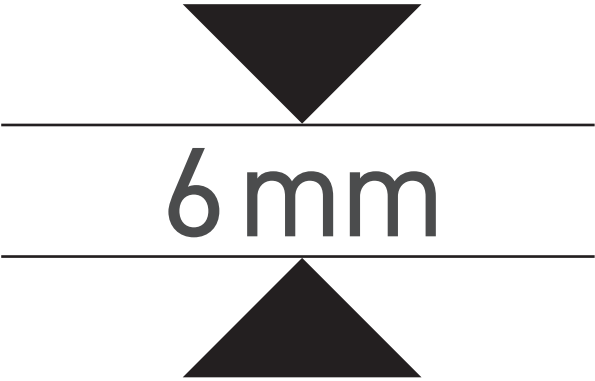
OLD RED



DARK



20"x11" - 51,6x27,2

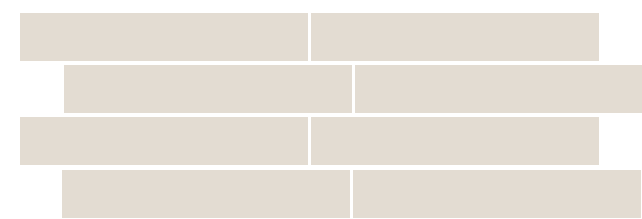


## PACKAGING

KG/MQ	12.7	Lb/Sq. Ft.	2.60
Pcs/BOX	10	Pcs/BOX	10
MQ/BOX	1.4*	Sq. Ft./BOX	15.07
BOX/Pallet	32	BOX/Pallet	32
MQ/Pallet	44.80	Sq. Ft./Pallet	482.2
KG/Pallet	487.7	Lb/Pallet	1075.2

\* 0,8 CM JOINT INCLUDED

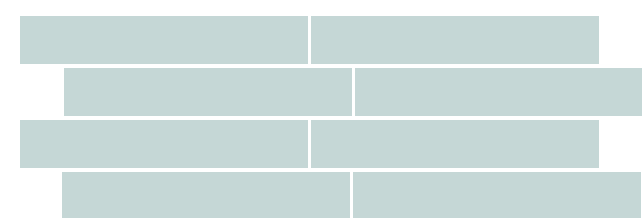
AVORIO



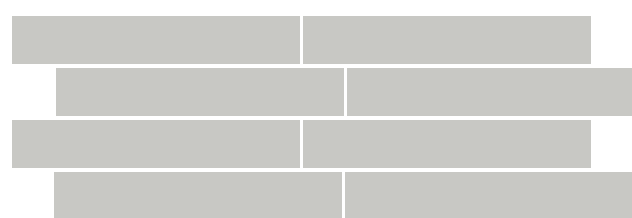
BIANCO & BIANCO MATT



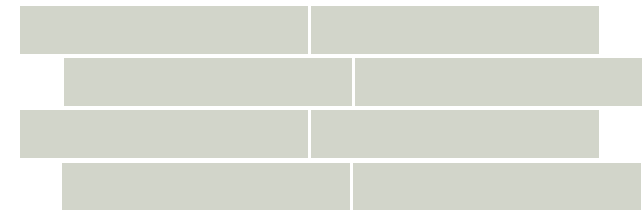
ACQUA



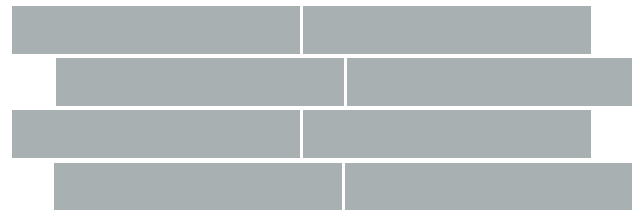
CENERE



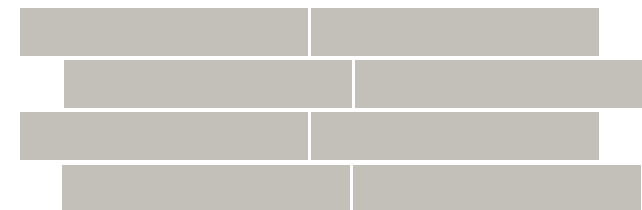
MENTA



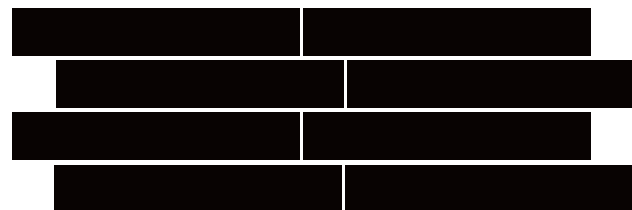
GRIGIO



GREIGE



NOTTE



2 2/5"x14 1/2" - 6,1x37

6 mm

PACKAGING

KG/MQ	12.9	Lb/Sq. Ft.	2.64
Pcs/BOX	60	Pcs/BOX	60
MQ/BOX	1.35	Sq. Ft./BOX	14.53
BOX/Pallet	60	BOX/Pallet	60
MQ/Pallet	81,00	Sq. Ft./Pallet	871.8
KG/Pallet	1044,9	Lb/Pallet	2303.6

TIP:

We recommend to spread the adhesive, both on the back of the tile and on the laying surface





**Rondine S.p.A.**

Via Emilia Ovest 53/A - 42048 Rubiera (RE) - Italy  
Tel. +39 0522 625111  
[info@ceramicarondine.it](mailto:info@ceramicarondine.it) - [www.ceramicarondine.it](http://www.ceramicarondine.it)



A company part of:

